
DataStudio



Data integration
and information delivery solution



ETL, at the heart of business performance

●●● The strong integration of applications has now become an essential player in business performance. Business intelligence tools are also now on the increase, faced with the challenge of consolidating heterogeneous data and restoring it, totally up-to-date, in the format best suited to its interpretation.

This is why ETL (Extract, Transform, Load) has today become a must for an IT system.

Putting paid to specific developments

All too often, ETL projects are still handled in an isolated manner, resulting in a proliferation of specific developments that are not only impossible to maintain over the long run but also a source of potentially critical dysfunctions in the smooth running of a business. At a time when the amount of data is increasing considerably along with the need for integration or reporting, home remedies are no longer an option.

Simplicity, consistency and performance

DataStudio is a proven solution known for its ease of use, and therefore for its productivity. Its effectiveness guarantees a quick return on investment, starting from the very first project. In addition to its cost-effectiveness, DataStudio offers excellent performance thanks to its ELT-based architecture.

DataStudio SOA to boost performance

As information systems integration becomes more structured, processing chains are experiencing increasingly long response times due to the increased volumes handled. In order to process large volumes, DataStudio is integrated as a web service into the chains to be optimized.

A solution for IT specialists to help users

Given not only the challenges, but also the technical background and overall vision required, implementing ETL processing cannot be entrusted to non-computer specialists alone. Consequently, while designed to help users, DataStudio relies on in-house IT teams to implement ETL functions in an effective and consistent manner within the information system.

Main application fields

Data integration

- Unification, migration, synchronization
- Multi-format importing and exporting
- Integration processing for CRM, MDM, BPM or web publication applications

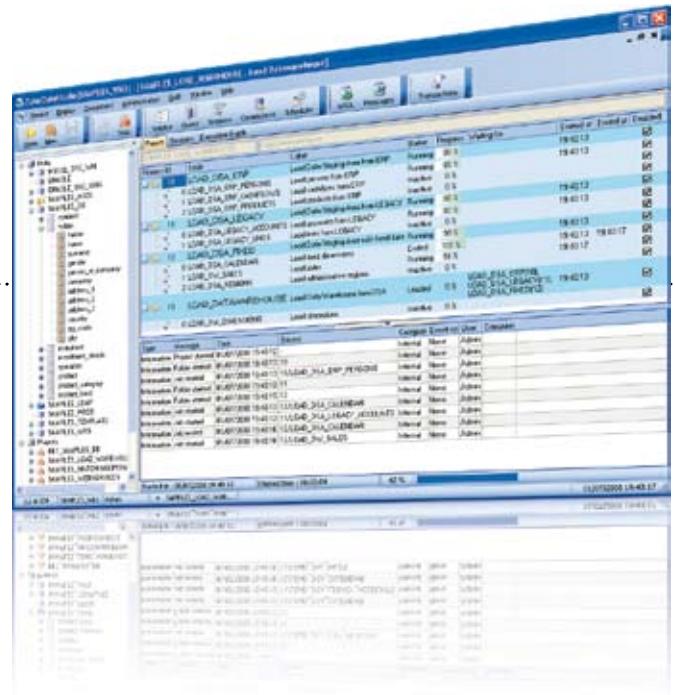
Business intelligence

- Data warehouse loading
- Distribution of information in XML, Excel, Word, PDF and html formats, among others
- Reporting

DataStudio: the advantages

- » Rich, intuitive graphic interface
- » Easy to implement and use
- » Performance based on EL-T architecture, parallelization and technology for loading large amounts of data
- » Optimized engine in native code: saves on resources
- » Standard diversified native connectivity (all RDBMS, all file formats)
- » Business-oriented format adapter: ETEBC, EDIFACT, NOEMIE, etc.
- » Connectivity extended to ERP, CRM, mainframes and non-relational data
- » Integrated reporting module
- » Management of data quality (normalization, deduplication, etc.)
- » Totally integrated platform: design, meta-data, versioning, deployment, scheduler, monitoring
- » Centralized repository, shared and secured as database
- » Comprehensive suite for Service-Oriented Architecture (SOA)
- » Available on Windows, Linux and Unix
- » Reuse and enhancement of existing data processing

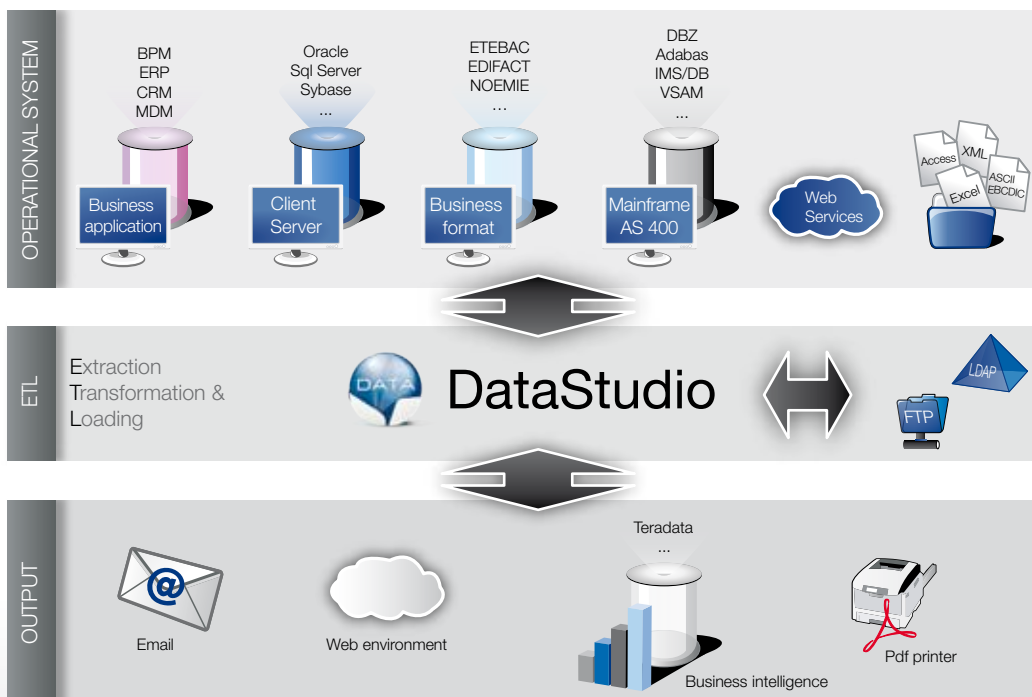
DataStudio offers all businesses a comprehensive and uniform solution for data integration and business intelligence information delivery. Continuously upgraded to anticipate the functional and technical demands of its customers, the truly integrated solution offered by **DataStudio** guarantees businesses the upgradeability and sustainability of their applications and information system.



Project documentation, data, processing, versioning: an integrated interface

A comprehensive, uniform representation of all the information system data

Once the heterogeneous data has been referenced, it is handled independently of its origin exactly as if it all came from one single environment. Exchange of inter-application data is implemented using simple SQL queries.



SET OF ADVANCED FUNCTIONALITIES

In addition to the possible handling of data with SQL:

- » Comprehensive interpreted script language: if, loops, variables, cursors, functions, exceptions, etc.
- » Repository handling
- » Advanced manipulations: excel, xml, rtf, html, etc.
- » Protocols: ftp, sftp, scp, http, https, dde, ssh, ldap, etc.
- » Email management
- » Management of transactions
- » Data comparison
- » Synchronization, locks
- » Access to the system: external calls, ActiveX, DLL, files, etc.
- » Integration of languages: shell, python, perl, php, etc.

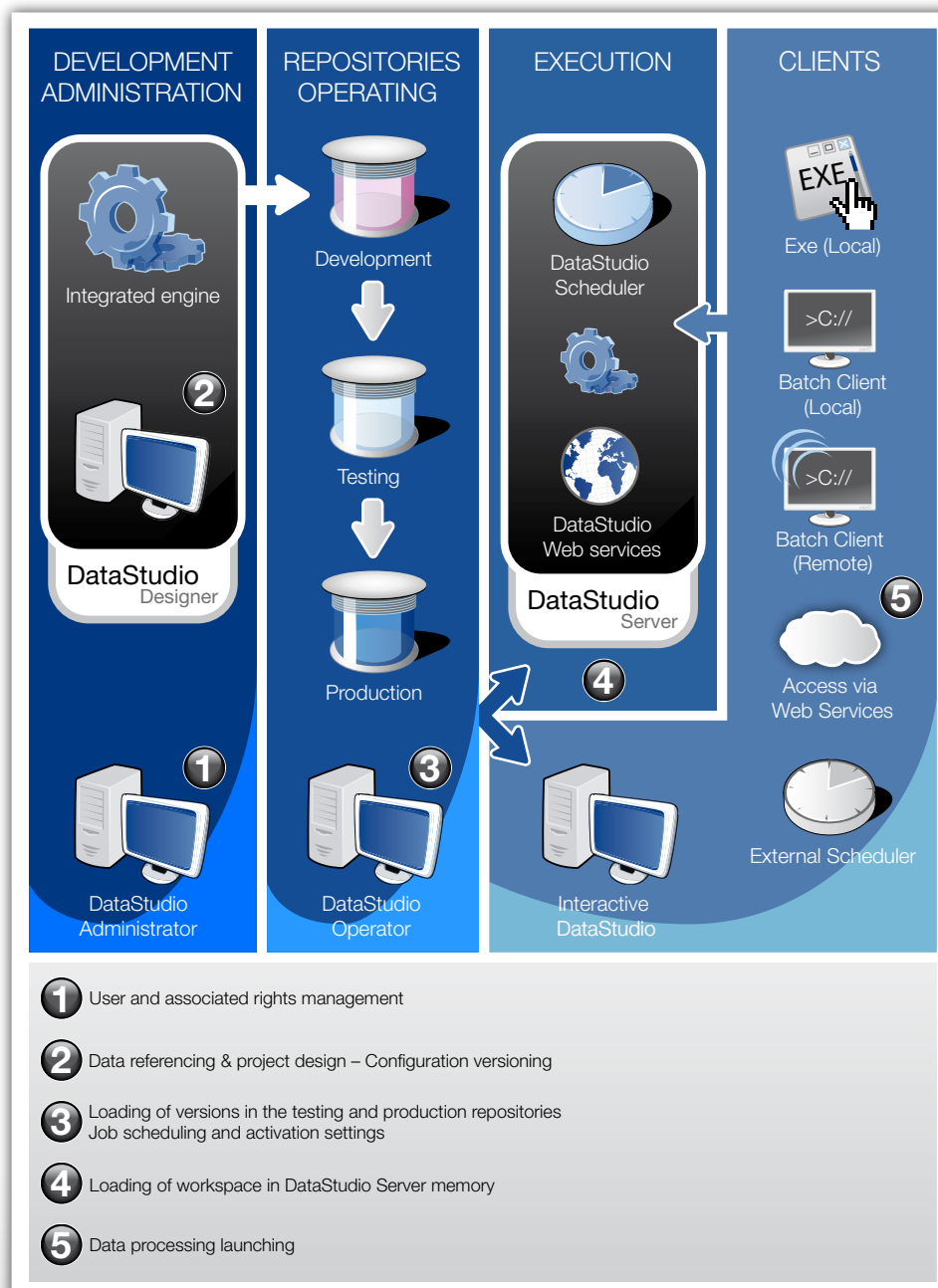
Special information for software publishers

OEM integration: DataStudio to enhance your software packages

Won over by the flexibility and wealth of DataStudio functional features, a number of professional software publishers have decided to integrate ETL into their own solutions.

If you would also like to include DataStudio as a key feature of your software package, please contact us at +33 (0)1 57 19 59 38.

Architecture



About Data

Founded in 2001, Data is the fruit of a team of engineers, experienced in data integration projects and ETL, who, having noticed the proliferation of specific developments destined to become obsolete rather quickly and which could be a source of problems in the long run, decided to create DataStudio based on a series of projects deployed within major businesses.

A commitment that goes beyond the product itself

With a view to providing full support to its customers in the deployment of DataStudio, Data offers a comprehensive portfolio of services, from training to turnkey solutions, and is thereby able to adapt to the level of support desired by each company. A service-oriented approach which, combined with the wealth of functions in DataStudio, guarantees an excellent return on investment for projects.

Hand in hand with customers

The Data teams apply an implementation methodology that naturally involves users in defining needs, but given the stakes, that also relies on in-house IT teams for building models and setting parameters. The Data engineering teams work closely with user companies from one version to the next, as well as with the software publishers and service providers who have integrated the ETL platform in their solutions. An on-going technology watch makes it possible to integrate new data formats as early as possible, some of which will become standards, as was the case for XML.



www.data.fr

The DataStudio ETL is not only cost-effective, easy to use and reliable, it is also a boon for our developers who immediately adopted it.

Eric Breuillon-Grisez,
Information Systems Manager,
Parnasse-MAIF

DataStudio provides us with a centralized console to supervise and administer all processing. This is clearly very reassuring and especially, it's much faster than when we use our specific developments.

Pierre Vassal,
Project Manager,
LeShop.ch

As well as...

Caisse Nationale des Caisses d'Épargne
Conseil Général de Seine Saint Denis
Dexia Epargne Pension
France Télécom R&D
La Mutuelle Nationale de Retraite des Artisans – MNRA
LeShop.Ch (Migros Group)
Mobility Saint Honoré (LCF Rothschild Group)
Parel (Société Générale Group)
Parnasse MAIF
Synchrotron Soleil (civil partnership of the CEA and the CNRS)
Syndicat des Transports d'Île de France – STIF
Véolia Eau



44 bis, boulevard Félix Faure
92320 CHATILLON France
Phone : +33 (0)1 57 19 59 38
Fax : +33 (0)1 57 19 59 73
contact@data.fr

www.data.fr